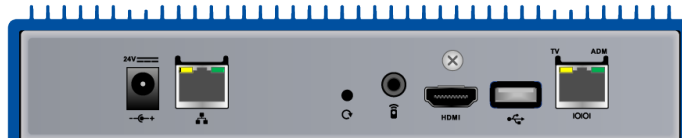
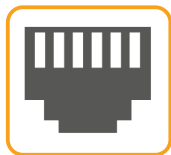


AvedaStream® 94-series Media Players Quick Start Guide



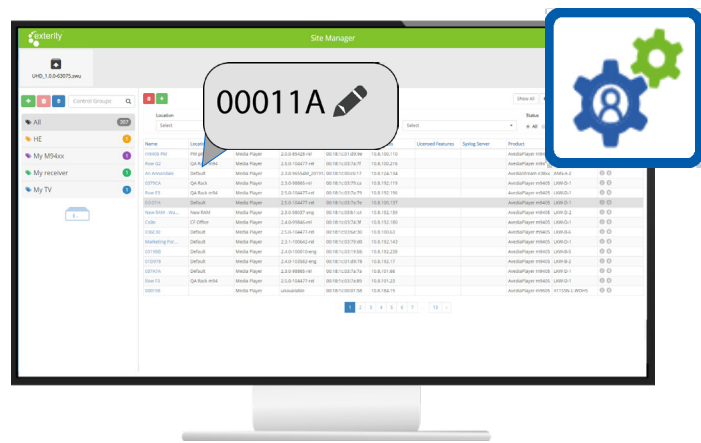
94-series Media Player



2 | Connect the media player to the network using a network cable. (If you don't have Power over Ethernet, use a network cable and the Exterity avply-psu-## external power adaptor.) The media player starts displaying the first channel in the channel list after a couple of minutes.

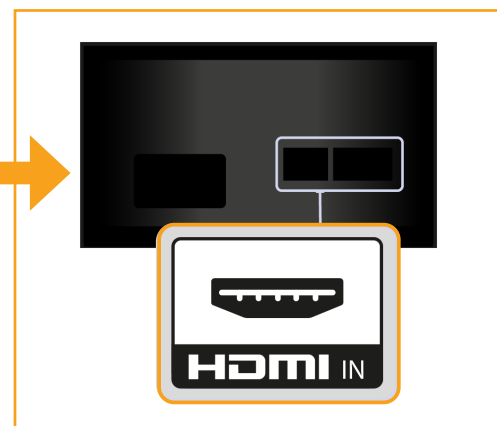


3 | (ArtioSign and ArtioGuest users) Locate the device's MAC address on the underside of the box, or using the IR remote control press i,1,0,2,4 then OK to display device details. Using the AvedaServer Site Manager application, use the search bar to locate the media player using its MAC address. Click the pencil icon to change its name and location to make the device easier to find in the list.

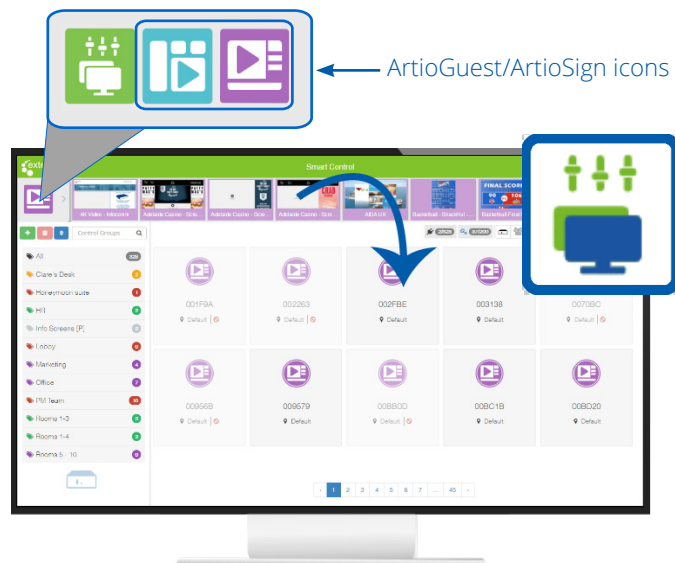


1 | Connect the media player to a display using a "Premium High Speed" or "Certified Premium" HDMI cable.

Display



4 | Open the AvedaServer Smart Control application. In the top left, click the green Smart Control icon, then select either the ArtioSign or ArtioGuest icon. The media player appears in the device list. Drag the required playlist/campaign or portal onto the media player to view it on the attached display.



Exterity Headquarters

t: +44 (0) 1383 828 250

w: www.exterity.com

e: info@exterity.com

V3.1 03 | 2021

