

# AvediaStream TVgateways



Datasheet (UCTxQIP\*)

## UCrypt UCTxQIP Create

Harnesses the power and scalability of the UCrypt TVGateway to deliver encrypted cable channels to Exterity IP video networks

- **Decrypts** encrypted cable TV streams
- **Delivers** up to 60 encrypted channels
- **Interoperable** with Exterity systems

### Gateway Functionality

#### Decrypts up to 60 encrypted cable channels

Capability to ingest up to 60 premium encrypted channels simultaneously into an Exterity IP video system.

#### Supports unencrypted content

The remainder of the tuner capacity can be used to ingest unencrypted content (Clear QAM).

#### Access to encrypted cable TV content using CableCARD

Support for CableCARD technology gives Exterity installations access to major cable TV networks for increased TV head end flexibility and capability.

#### Scalable support for 6 – 60 tuners in one chassis

The end customer can scale their channel list with their needs within one product. Additional tuner cards can be requested through Exterity support.



#### Field-upgradeable

The UCrypt unit can be maintained on site, meaning that the end customer can easily add more channels or replace a failed power supply.

#### Power supply redundancy

Automatically switching fully redundant power supply modules.

#### Interoperability with Exterity systems

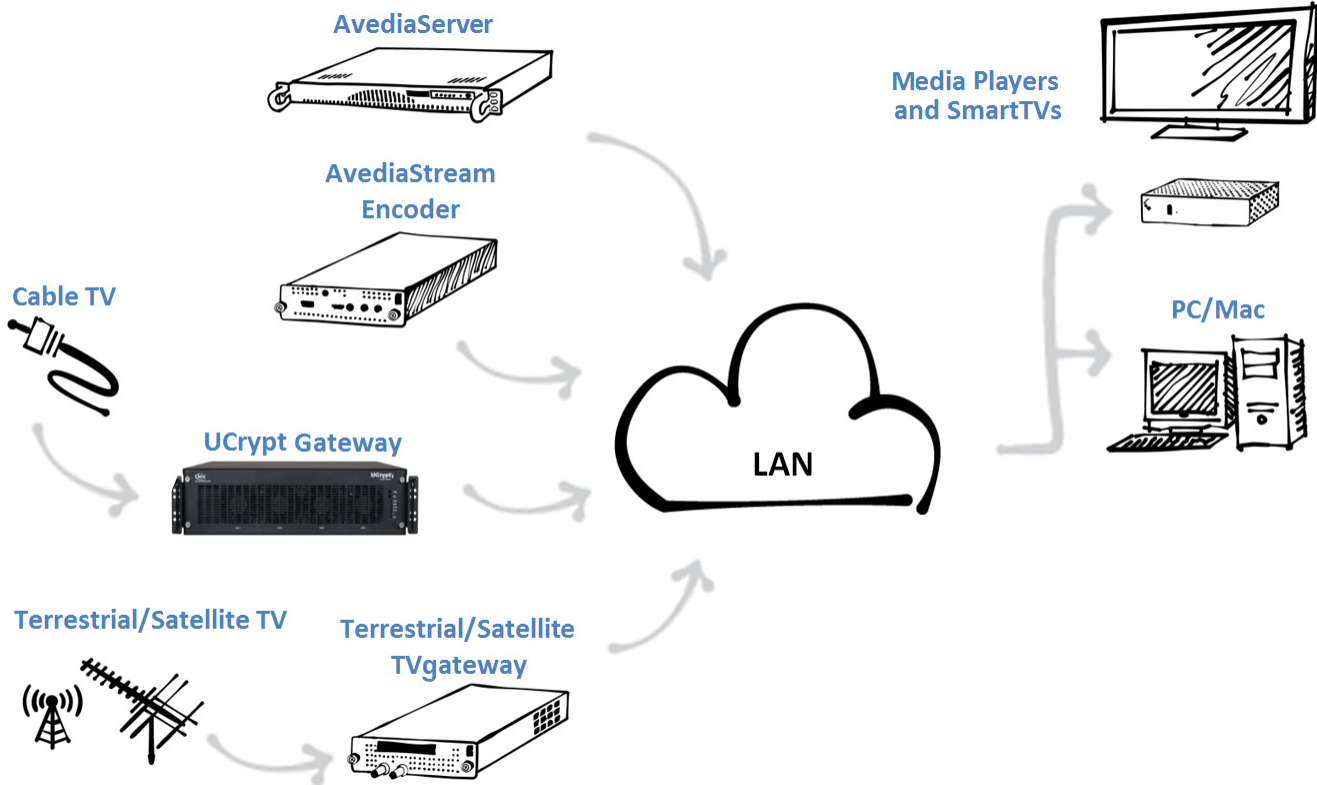
The UCrypt gateway uses UDP multicast streams and is interoperable with Exterity systems.

**Note:** An AvediaServer is required to create channel announcements.

\*x = 12, 24, 48, 60

## UCrypt QAM to IP Gateway

The UCrypt gateway occupies a key position amongst US headend options. The gateway ingests encrypted and unencrypted cable TV multiplexes and multicasts chosen programs. It can be installed as part of a new or existing Exterity system, through one installer.



**Note:** UCrypt QAM to IP gateways are delivered in partnership with ATX Networks. A full UCrypt QAM to IP datasheet can be found [here](#).



**This is a US-only product**